

FORGED TEES S.W.



ND	Size(s) (IPS)	Inconel 625			CUNI 70/30 & 90/10						Stain Steel		Titanium			Monel 400		Steel	
		Class #			Class #						Class #		Class #			Class #		Class #	
		850	3000	6000	200	400	700	1650	3300	6000	3000	6000	850	3000	6000	3000	6000	3000	6000
6	1/4"	X	X	X	X	X	X	X	X	X	X	X	X	X	X	X	X	X	
8	3/8"	X	X	X	X	X	X	X	X	X	X	X	X	X	X	X	X	X	
12	1/2"	X	X	X	X	X	X	X	X	X	X	X	X	X	X	X	X	X	
15	3/4"	X	X	X	X	X	X	X	X	X	X	X	X	X	X	X	X	X	
20	1"	X	X	X	X	X	X	X	X	X	X	X	X	X	X	X	X	X	
32	1-1/4"	X	X	X	X	X	X	X	X	X	X	X	X	X	X	X	X	X	
40	1-1/2"	X	X	X	X	X	X	X	X	X	X	X	X	X	X	X	X	X	
50	2"	X	X	X	X	X	X	X	X	X	X	X	X	X	X	X	X	X	
65	2-1/2"				X	X	X	X	X									X	
80	3"				X	X	X	X	X										
100	4"				X	X	X	X											

NOTES:

* REDUCING SIZES ARE AVAILABLE ON REQUEST

** All Pictures are shown in 3D



Main Office Telephone Number: 562-733-4600

Sales Telephone Number: 562-733-4634

Fax Number: 562-733-4640

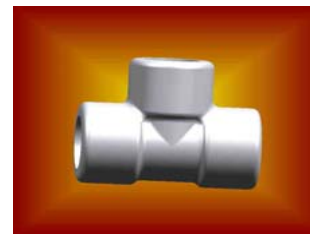
Web Site: <http://www.cunicocorp.com>

ANSI B16.11, 3000 & 6000 PSI

803-6397430, 400 PSI







3000 PSI S.W., TEE



3000 PSI S.W., TEE



400, 3000 & 6000 PSI BLANK S.W., TEE

APPLICATIONS							
SUBMARINES			AIRCRAFT CARRIERS		PETROCHEMICAL	NUCLEAR	SURFACE SHIPS
							
SSN's	SSBN's	DIESEL ELECTRIC	CVN-21				