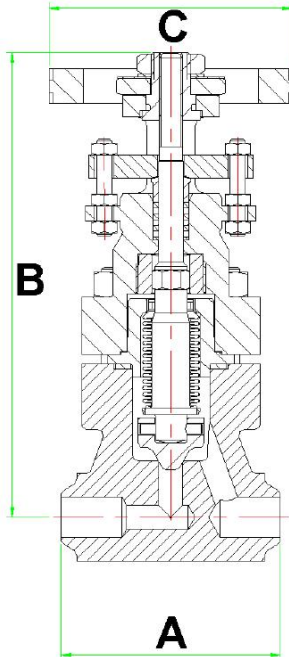


Series 34A Bolted Bonnet Valve - Straight Pattern



Class 800/900/1500 bellows sealed globe valve to BS5352, standard bore, outside screw and yoke, non-rising handwheel, bolted bonnet. Available with integral hard faced seat or screwed in stainless steel seat. Valve can be supplied with actuator - electric or pneumatic. Butt weld end connections shown, also available as screwed, socket weld, flanged or special connection.

Nuclear versions to ASME III available.

Maximum pressure / temperature ratings are restricted by the valve end connections and the body / bonnet materials. Shown are the maximum ratings for socket weld, butt weld and screwed ends to BS5352.

Materials can be changed to customer specifications. There are temperature restrictions on some materials, ie. C.St. ASTM A105 is not recommended for use above 425 °C.

If in doubt please ask, we will advise suitable materials for the temperature, pressure and media.

Service Temperature °C	Service Pressure Bar g
-38 to +38	99
50	98
100	96
150	94
200	91
250	87
300	79
350	71
400	63
450	55
500	34

Valve Size DN	Dimensions (typical)									
	Class 800					Class 900/1500				
	Dim A mm	Dim B mm	Dim C mm	Weight Kg	Cv UK Gal/min	Dim A mm	Dim B mm	Dim C mm	Weight Kg	Cv UK Gal/min
DN6	108	241	100	9	1.7	216	321	150	12	1.7
DN15	108	241	100	9	2.45	216	321	150	12	2.45
DN20	117	241	100	9	2.45	229	321	150	12	2.45
DN25	127	254	100	9.6	5.8	254	384	150	15	5.8
DN40	165	368	150	24	12.4	305	458	200	30	12.4
DN50	203	400	150	25	18.5	368	530	290	35	18.5

Component	Material	
	Carbon Steel Valve	Stainless Steel Valve
Body	C.St. ASTM A105	St.St. Type 316L
Bonnet	C.St. ASTM A105	St.St. Type 316L
Seat	St.St. Type 410 or integral Stellite HF	St.St. Type 410 or integral Stellite HF
Disk	St.St. Type 410 or Stellite HF	St.St. Type 410 or Stellite HF
Stem	St.St. Type 316L	St.St. Type 316L
Bellows	St.St. Type 316L	St.St. Type 316L
Back up Gland	Exfoliated graphite	Exfoliated graphite
Yoke Bush	Aluminium bronze	Aluminium bronze

