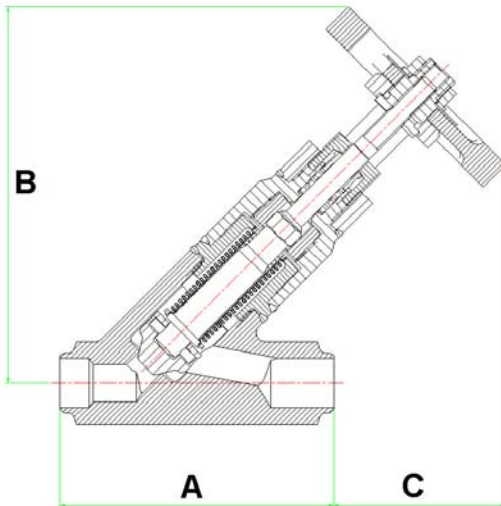


## Series 35B Seal Welded Bonnet Valve - Oblique Pattern



Seal Welded Bonnet Valve - Oblique Pattern. Standard Bore, Outside Screw and Yoke, Non-rising handwheel, Seal Welded Bonnet.

Available with Integral Hard Faced Seat to offer increased resistance against corrosion.

Valve can be supplied with Actuator - Electric or Pneumatic.

Buttweld end connections shown, also available as screwed, socket weld, flanged or special connection

Maximum Pressure / Temperature ratings are restricted by the valve end connections and the body / bonnet materials.

Shown are the maximum ratings for socket weld, butt weld and screwed ends to BS5352.

Temperature °C	Pressure Bar g
-30 to 38	99
50	98
100	96
150	94
200	91
250	87
300	79
350	71
400	63
450	55
500	34

Dimensions (typical)					
Class 800					
Valve Size DN	Dim A mm	Dim B mm	Dim C mm	Weight Kg	Cv UK Gal/min
DN8	154	210	95	9	4.4
DN15	154	210	95	10	4.4
DN20	154	210	95	11	4.4
DN25	154	210	95	11	9.1
DN40	224	325	165	24	27.5
DN50	274	325	130	25	40

Dimensions are subject to confirmation.

Drawings with confirmed dimensions can be supplied at time of order.

Material Specification		
	Carbon Steel Valve	Stainless Steel Valve
Body & Bonnet	C.St. ASTM A105	St.St. BS1503 304S11
Seat	St.St. Type 410 or Integral Stellite Hard Facing	St.St. Type 410 or Integral Stellite Hard Facing
Disk	St.St. Type 410 or Stellite Hard Facing	St.St. Type 410 or Stellite Hard Facing
Stem	St. St. Type 304	St. St. Type 304
Bellows	St. St. Type 304	St. St. Type 304
Gland	Exfoliated Graphite	Exfoliated Graphite
Bush	Aluminium Bronze	Aluminium Bronze

Materials can be changed to customer specifications.

There are temperature restrictions on some materials, ie. C.St. ASTM A105 is not recommended for use above 425°C.

If in doubt please ask, we will advise suitable materials for the temperature, pressure and media.

