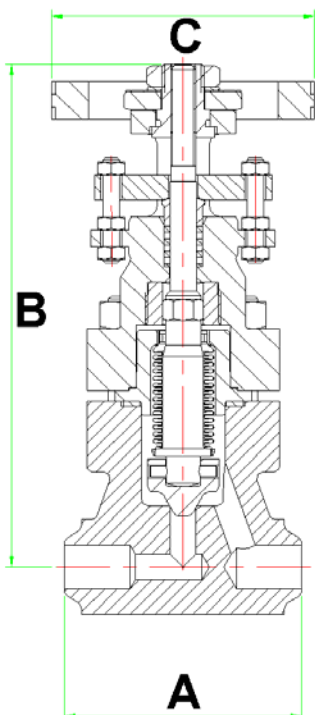


Series 4 High Temperature Bellows Sealed Valve



Class 600 Bellows Sealed Globe Valve, Conventional Bore, Outside Screw and Yoke, Non-rising Handwheel, Bolted Bonnet.
Available with Integral Hard Faced Seat or Screwed in Stainless Steel Seat
Valve can be supplied with Actuator - Electric or Pneumatic.
Buttweld end connections shown, also available as screwed, socket weld, Flanged or special connection.
ASME III option available.
Straight Pattern shown, also available as Angle pattern and Oblique pattern.

Maximum Pressure / Temperature ratings are restricted by the valve end connections and the body / bonnet materials. Shown are the maximum ratings for socket weld, buttweld and screwed.

Materials can be changed to customer specifications.
There are temperature restrictions on some materials, ie. C.St. ASTM A105 is not recommended for use above 425°C.
If in doubt please ask, we will advise suitable materials for the temperature, pressure and media.

Service Temperature °C	Service Pressure bar g
38	103.4
50	101.6
100	94.2
200	79.6
300	70.6
400	65.7
500	63.4
600	49.8
700	22.8
800	8.8
816	7.2

Dimensions					
Valve Size DN	Dim A mm	Dim B mm	Dim C mm	Weight Kg	Cv IGPM
DN8	108	241	100	9	1.7
DN15	108	241	100	9	2.45
DN20	117	241	100	9	2.45
DN25	127	254	100	9.6	5.8
DN40	165	368	150	24	12.4
DN50	203	400	150	25	18.5

Material Specification	
	Stainless Steel Valve
Body	St.St. ASTM A182 F316H
Bonnet	St.St. ASTM A182 F316H
Seat	Integral Hard Faced
Disk	St. St. - Hard Faced
Stem	St.St. ASTM A182 F316H
Bellows	Incolloy 800H or 800HT
Back up Gland	Exfoliated Graphite
Yoke Bush	Aluminium Bronze

