

SEAMLESS ELBOWS B.W.

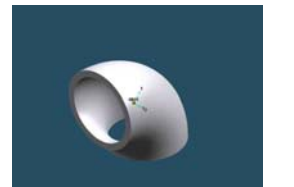
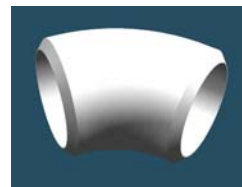
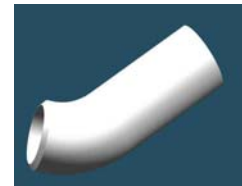
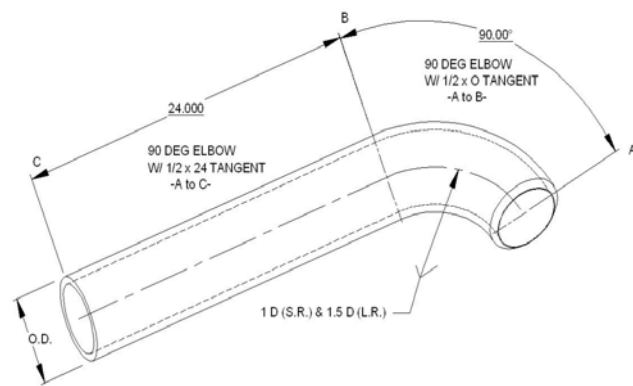


ND	Size(s) (IPS)	Inconel 600 or 625					CUNI 70/30			Stain Steel 304 & 316					Titanium				Monel 400					Steel (ANSI B16.9 & B16.28)												
		Schedule				Tangent Length	Class #			Tangent Length	Schedule				Tangent Length	Schedule				Tangent Length	Schedule				Tangent Length											
		10	20	40	80		120	200	700		1650	3300	10	20		40	80	120	160		10	20	40	80		120	160	10	20	40	80	120	160			
20	1"	X					0" to 24"	X				0" to 24"	X				0" to 24"	X				0" to 24"	X					0" to 24"	X					0" to 24"		
		X					0" to 24"		X			0" to 24"	X				0" to 24"	X				0" to 24"	X					0" to 24"	X					0" to 24"		
			X				0" to 24"			X			0" to 24"	X				0" to 24"	X				0" to 24"	X					0" to 24"	X					0" to 24"	
				X			0" to 24"				X			0" to 24"	X				0" to 24"	X				0" to 24"	X					0" to 24"	X					0" to 24"
					X		0" to 24"					X			0" to 24"	X				0" to 24"	X				0" to 24"	X					0" to 24"	X				

NOTES:
 SEAMLESS ELBOWS 45 DEG AND 90 DEG
 TANGENT LENGTHS AVAILABLE
 * One End - From 0" to 1-1/2"
 * Other End - from 0" to 24"
 * Longer tangents available on request

CUNICO
 Main Office Tel: 562-733-4600
 Sales Tel: 562-733-4633 / x4634
 Fax: 562-733-4640

810-1385880 - CLASS 200
 MIL-F-24202 - CLASS 700
 820-2177965
 ANSI B16.9, B16.28



 www.cunico.com	SUBMARINES			SURFACE SHIPS		 www.dynamiccontrols.co.uk
	 SSN's	 SSBN's	 DIESEL ELECTRIC	 CVN's	 DD's and CG's	